



# Inspire Future Leader with Early Achievers

We cultivate young minds through nurturing  
development and celebrating each achievement.



**Early Achievers**  
PRESCHOOL • HAWAII

# Introduction

At Early Achievers, we give your little ones a great start to their education. Our program creates a positive and engaging first school experience, building independent work habits and social skills while preparing them for future learning.

With a balance of structured learning and child-led exploration, we make learning fun and meaningful. From the alphabet and phonics to letter writing and CVC words, we ensure they're ready and excited for Kindergarten. Discover how Early Achievers can set your child up for success!



# About Us

Pamela Lee, the head of school at Early Achievers, began her career in 1991 and has taught PreK–7th in the US and Korea. She founded an international preschool in Seoul, which became a feeder for K-12 schools there. In 2012, Pamela and her husband Sam launched Sylvan Learning Center in Honolulu and Bright Beginnings ESL Hawaii. Their mission has always been to inspire Hawaii's keiki.

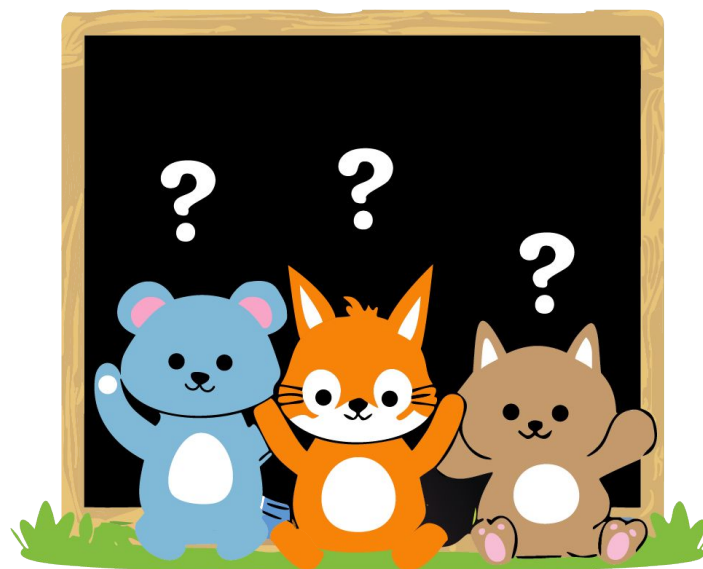
Partnering with C2C Global Education, which operates schools in Japan, China, Vietnam, and India, Pamela along with C2C aim to create an exceptional preschool experience for local children here in Hawaii.



# Why Pick Us

We believe Early Achievers is the best preschool choice for your child. Here's why we stand out:

- **Academic Orientation:** We prioritize academics alongside enjoyable activities like arts, music, and sports.
- **Achievement Focus:** We foster early achievement, celebrating milestones and successes.
- **Admissions Preparation:** We prepare your child for kindergarten, equipping them with necessary skills and assisting with the admissions process.
- **Amazing Staff:** Our nurturing, caring, and safe environment is provided by our exceptional staff.



# Application Process

We have a rolling enrollment/application schedule with interviews and parent tours to follow. First classes begin August 2025.

- September 1, 2024 – Rolling Application Open
- Jan 2025 – Mar 2025 – Interviews And Class Visits
- April 15, 2025 – Notification Of Application Decisions
- April 30, 2025 – Deposits Due For 2025-2026 Academic Year
- July 1, 2025 – First Tuition Payments Due
- August 17, 2025 – New Student Orientation

Start by submitting an application. Space is limited.



# Our Promise

At Early Achievers, we are committed to creating a positive first school experience that engages and challenges while also preparing keiki for what comes next in their education.

We provide a strong foundation in independent work habits and developing social skills, along with opportunities for cognitive, emotional, and physical growth.

Preschoolers dive into practical and meaningful learning experiences that introduce key concepts. It's a balanced approach that encourages child-led inquiries and sparks their imagination.

From learning the basics like the alphabet and phonics to mastering letter writing every step is fun and meaningful. Early Achievers will set them up for success!



# Earn a Referral Reward

We think that when your child begins their education at Early Achievers Hawaii, you're going to want to spread the word. We appreciate that! So, we want to reward referrals.

You will earn a special reward when you tell other families about Early Achievers Hawaii, and they enroll their child — and they'll be rewarded as well!

- **\$250 credit for your child's costs**
- **New enrollee gets \$250 credit when they enroll**

Simply share your good experiences with your friends and families and earn rewards. There is no limit to the rewards you can earn.

It's our way of thanking you for being part of our Early Achievements Hawaii ohana!



# Contact Us



**Early Achievers**  
PRESCHOOL • HAWAII



808.731.1881



1261 Pueo St, Honolulu, HI 96816



[info@earlyachievershawaii.com](mailto:info@earlyachievershawaii.com)



[earlyachievershawaii.com](http://earlyachievershawaii.com)